

# Village of East Troy

## Phosphorus Compliance via the MDV Watershed Plan



Tom Pluess, East Troy  
Leo Kucek, Applied Technologies, Inc.



# Compliance Planning



## New Limits

0.075 mg/L if no other action taken

## Strategy

Long-term approach

## Values

Keep it local

# Compliance Alternatives

	MDV County Payment	MDV Watershed Plan	Water Quality Trading
<b>Nonpoint Source (NPS) Credits Required</b>	203 lb/year	203 lb/year	336 lb/year
<b>Target Phosphorus</b>	0.2 mg/L	0.2 mg/L	0.075 mg/L
<b>Eligibility</b>	<ul style="list-style-type: none"> <li>• Up to 3 permit terms</li> <li>• Economic justification</li> <li>• Lose if &lt; 0.2 mg/L</li> </ul>	<ul style="list-style-type: none"> <li>• Up to 3 permit terms</li> <li>• Economic justification</li> </ul>	<ul style="list-style-type: none"> <li>• Permanent</li> </ul>
<b>When to Secure NPS Credits</b>	After Use	Before Use	Before Use



# Finding a Partner

## Outreach

“DNR”

Called,  
knocked on  
doors

Walworth  
County, GIS,  
research

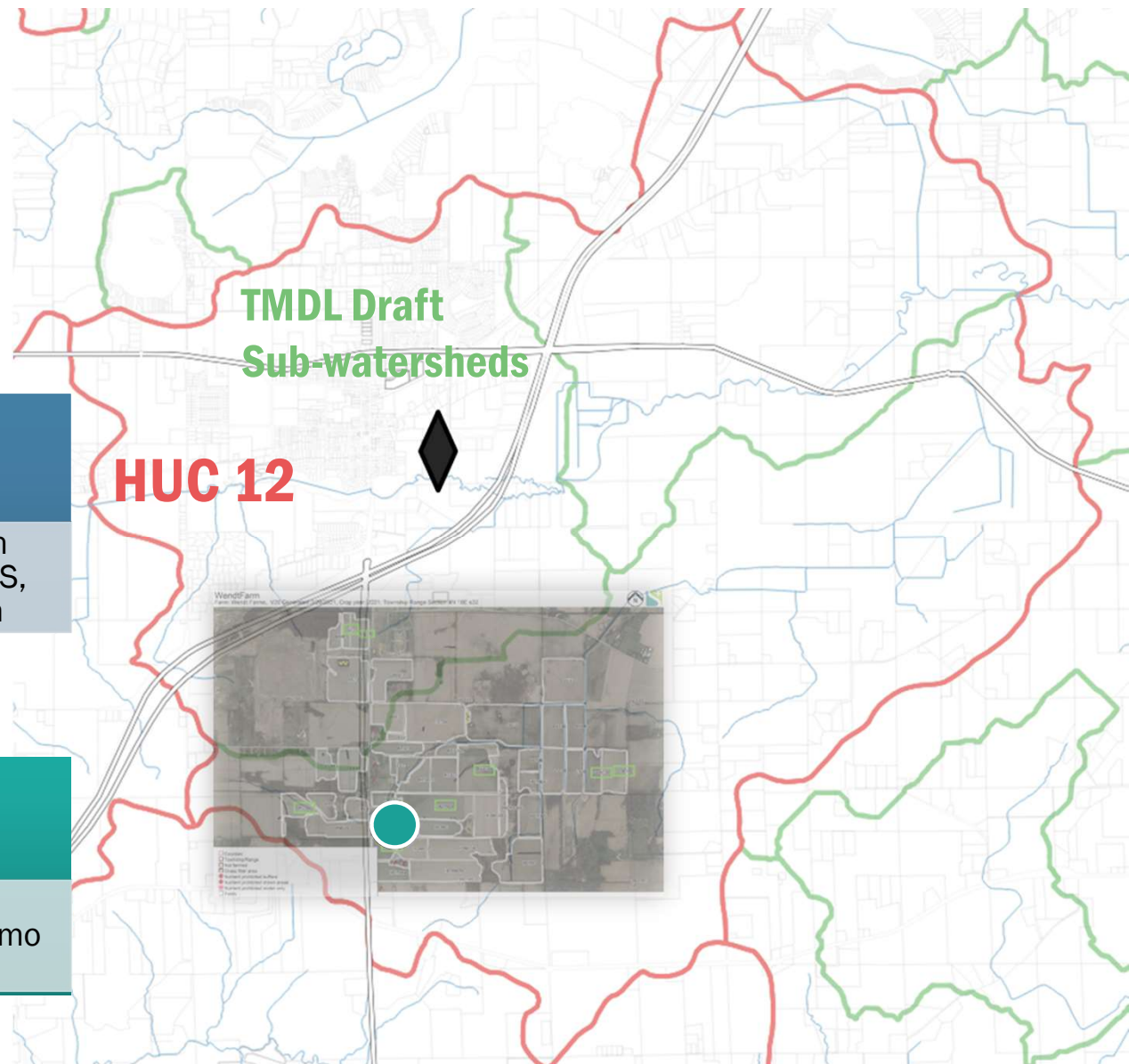


## Found a Partner

Persistence!

Pitched the  
idea

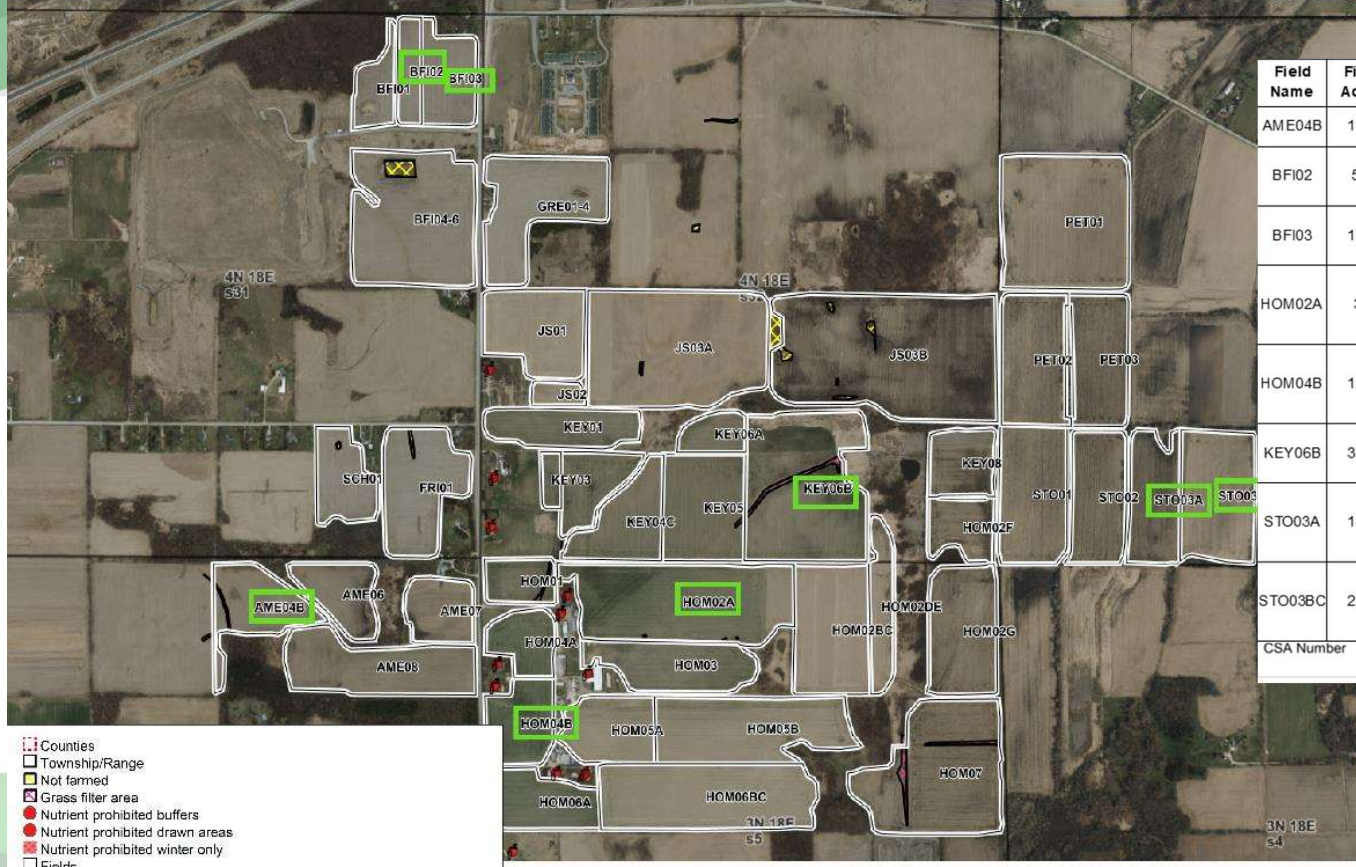
Shared memo



# SnapPlus/MDV Watershed Agreement

WendtFarm

Farm: Wendt Farms, V20 Generated: 3/29/2021, Crop year: 2021, Township Range Section: 4N 18E s32



Field Name	Field Acres	Credits (lbs P/yr)	Parcel	County	Township	Range	Sec	Quarter / Quarter	Parcel Acres	Owner
AME04B	13.8	21	O SP 600001C	Walworth	3N	18E	6	NW 1/2 of NE 1/4	35	Ames Acres LLC
BFI02	5.8	9	RXUP 00256	Walworth	4N	18E	31	NE 1/4 of NE 1/4	84	Village of East Troy
BFI03	11.5	17	RXUP 00256	Walworth	4N	18E	31	NE 1/4 of NE 1/4	84	Village of East Troy
HOM02A	38	59	O SP 5000001	Walworth	3N	18E	5	NW 1/4 of NW 1/4	153	Gordon F Wendt Trust & Maureen A Wendt Trust
HOM04B	12.2	24	O SP 5000002	Walworth	3N	18E	5	SW 1/4 of NW 1/4	154	Gordon F Wendt Trust & Maureen A Wendt Trust
KEY06B	37.7	44	P ET3200006	Walworth	4N	18E	32	NE 1/4 of SW 1/4	139	Key Family LLC
STO03A	14.8	26	P ET3300009	Walworth	4N	18E	33	SW 1/4 of SW 1/4	40	Gordon F Wendt Trust & Maureen A Wendt Trust
STO03BC	21.7	23	P ET3300009	Walworth	4N	18E	33	SW 1/4 of SW 1/4	40	Gordon F Wendt Trust & Maureen A Wendt Trust
CSA Number			Typed Name of Landowner/Operator <b>Pete Wendt</b>						Initials of Landowner	



# Preparing for the Future

1

New limits due to TMDL? →  
Can get more credits.

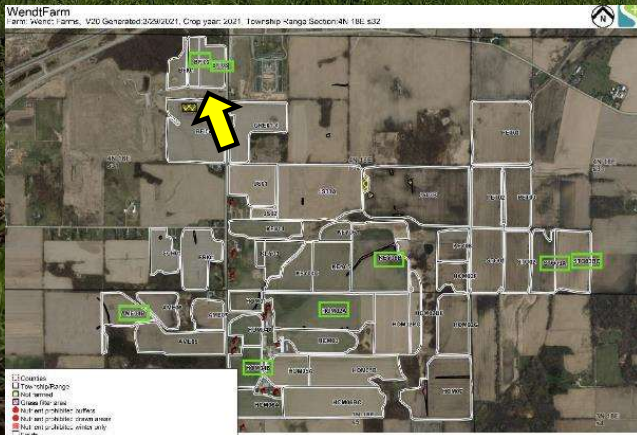
2

Clearinghouse  
“clears out”  
BMPs? Already  
have a partner.

3

MDV Expiration  
→ WQT Plan

# Cover Crops: Keeping it Local



# Cover Crops Work

**Before**

Even with grassed-waterways installed, runoff was dirty by Pete's driveway.

**After**

Pete noticed that the runoff was clear.





# Questions?

Tom Pluess  
Village of East Troy  
(414) 642-6255  
tpluess@eastroywi.gov

Leo Kucek  
Applied Technologies, Inc.  
(262) 784-7690  
lakucek@ati-ae.com