



Central States  
Water  
Environment  
Association

CSWEA  
Leadership  
Academy

# *“Leadership, Knowledge, and Networking Opportunities through Professional Organizations”*

*Scott Trotter, P.E., BCEE*

April 2011



Central States  
Water  
Environment  
Association

CSWEA  
Leadership  
Academy

April 2011

## *Leadership, Knowledge & Networking*

- How Did You Get This Opportunity?
  - ✓ I asked to come on my own
  - ✓ My friends invited me
  - ✓ My colleagues at work encouraged me to come
  - ✓ Someone else in the profession encouraged me to attend
  - ✓ My boss / professor encouraged me to attend



Central States  
Water  
Environment  
Association

CSWEA  
Leadership  
Academy

April 2011

# *Leadership, Knowledge & Networking*

- What is your current role in the industry
  - ✓ Student
  - ✓ Consultants
  - ✓ PWO - Government
  - ✓ Manufacturer/ Man. Representative
  
- Years of Experience:
  - ✓ Less than 2 Years Experience
  - ✓ Between 2 – 5 Years Experience
  - ✓ Between 5 – 10 Years Experience
  - ✓ More than 10 Years Experience



Central States  
Water  
Environment  
Association

CSWEA  
Leadership  
Academy

April 2011

# *Leadership, Knowledge & Networking*

- Who is attending the Education Seminar?
  - ✓ Who are first time attendees?
  - ✓ How many have attended previously?
  - ✓ Those that are not attending?
    - Didn't know about it?
    - Couldn't get away for two days
    - Chose Leadership over the Ed Seminar
    - Travel Restrictions
    - Family Obligations
    - Budget Limitations
    - Lack Company Support



Central States  
Water  
Environment  
Association

CSWEA  
Leadership  
Academy

April 2011

# *Leadership, Knowledge & Networking*

- Who's active in a Professional Organization
  - ✓ Members of CSWEA or other
  - ✓ Was part of a Student Chapter
  - ✓ Currently serves on a Committee
  - ✓ Has given a paper or presentation



Central States  
Water  
Environment  
Association

CSWEA  
Leadership  
Academy

April 2011

# *Leadership, Knowledge & Networking*

- Who is a good Public Speaker?
  - ✓ Can give a solid technical presentation?
  - ✓ Can lead an interview with a client
  - ✓ Can lead a project team meeting
  - ✓ Can stand-up and spontaneously tell a joke
  
- Who dreads Public Speaking?
  - ✓ Nervous no matter what with people I don't know?
  - ✓ Get nervous just introducing myself in a crowd?
  - ✓ Feel better with a rehearsed presentation?



Central States  
Water  
Environment  
Association

CSWEA  
Leadership  
Academy

April 2011

# *Leadership, Knowledge & Networking*

- The water industry is evolving
  - ✓ Water is the key to social and economic stability
    - Public Health
    - Environment
    - Industry: agriculture, power, manufacturing, commerce
  - ✓ Water will be the “new” Oil
    - The Water Industry will need a new generation of leaders
    - Those leaders will emerge as well rounded individuals





Central States  
Water  
Environment  
Association

CSWEA  
Leadership  
Academy

April 2011

# *Leadership, Knowledge & Networking*

- What does it take to be an effective leader?
  - ✓ Earn the Confidence, Respect and Trust of your peers
  - ✓ Experience and Knowledge to understand the issues
  - ✓ Network and resources to identify sound solutions
  - ✓ Ability to develop consensus among stakeholders
  - ✓ Encourage the professional development of others
  
- How do you become an effective leader?
  - ✓ Leaders are built not born
  - ✓ Find mentor(s)
  - ✓ Develop a style that fits you
  - ✓ One of the most proven venues to build this skill set is through being involved in a Professional Organization





Central States  
Water  
Environment  
Association

CSWEA  
Leadership  
Academy

April 2011

# *Leadership, Knowledge & Networking*

- Professional Organizations
  - Leadership Skills
    - ✓ Observe different leadership styles and strategies
    - ✓ Take a leadership role through committees, etc.
    - ✓ Learn how to empower others to lead
  - Knowledge Transfer
    - ✓ Learn about the challenges facing our profession
    - ✓ Increase your technical expertise
    - ✓ Share your knowledge and experience with others
  - Networking Opportunities
    - ✓ Increase your pool of resources
    - ✓ Develop relationships outside your organization
    - ✓ Improve your social skills



Central States  
Water  
Environment  
Association

CSWEA  
Leadership  
Academy

April 2011

# *Leadership, Knowledge & Networking*

- Professional Organizations
  - How are they structured?
  - How do you chose an organization?
  - How do you get involved?
  - What if you want be involved but not lead?
  - What kind of time commitment does it take?



Central States  
Water  
Environment  
Association

CSWEA  
Leadership  
Academy

April 2011

# *Leadership, Knowledge & Networking*

- Water Environment Federation?
  - ✓ Water Environment Federation was founded in 1928 to provide a forum for water quality professionals to exchange information and technical advancements within the industry.
  - ✓ WEF has expanded its horizon beyond wastewater to include water reuse, watershed management and sustainability practices.
  - ✓ The Federation is made up of 45 Member Associations, which have roughly 18,000 members in the United States.
  - ✓ Central States WEA is a Member Association



Central States  
Water  
Environment  
Association

CSWEA  
Leadership  
Academy

April 2011

## *Leadership, Knowledge & Networking*

- Central States Water Environment Association
  - Founding Members of WEF in 1928
  - Roughly 1,400 Members including Operators, Managers, Consultants, Manufacturers, and Sales Representatives.
  - CSWEA Serves Members in Illinois, Wisconsin and Minnesota

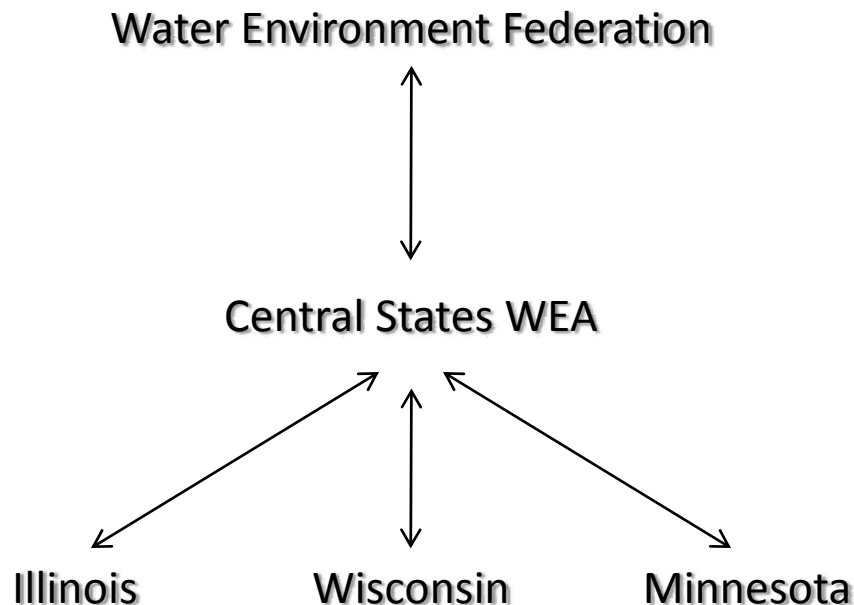


Central States  
Water  
Environment  
Association

CSWEA  
Leadership  
Academy

April 2011

# *Leadership, Knowledge & Networking*



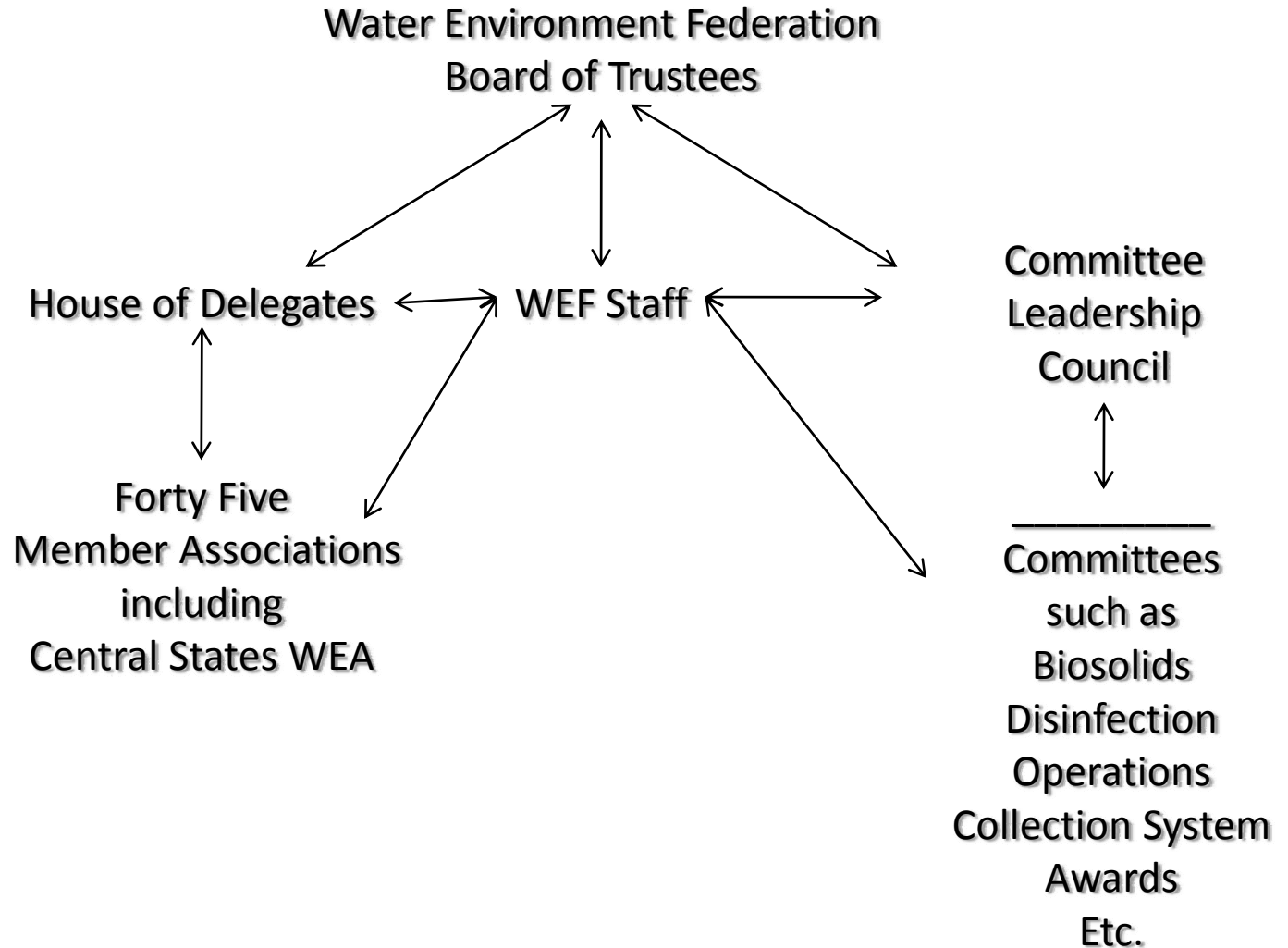


# Leadership, Knowledge & Networking

Central States  
Water  
Environment  
Association

CSWEA  
Leadership  
Academy

April 2011





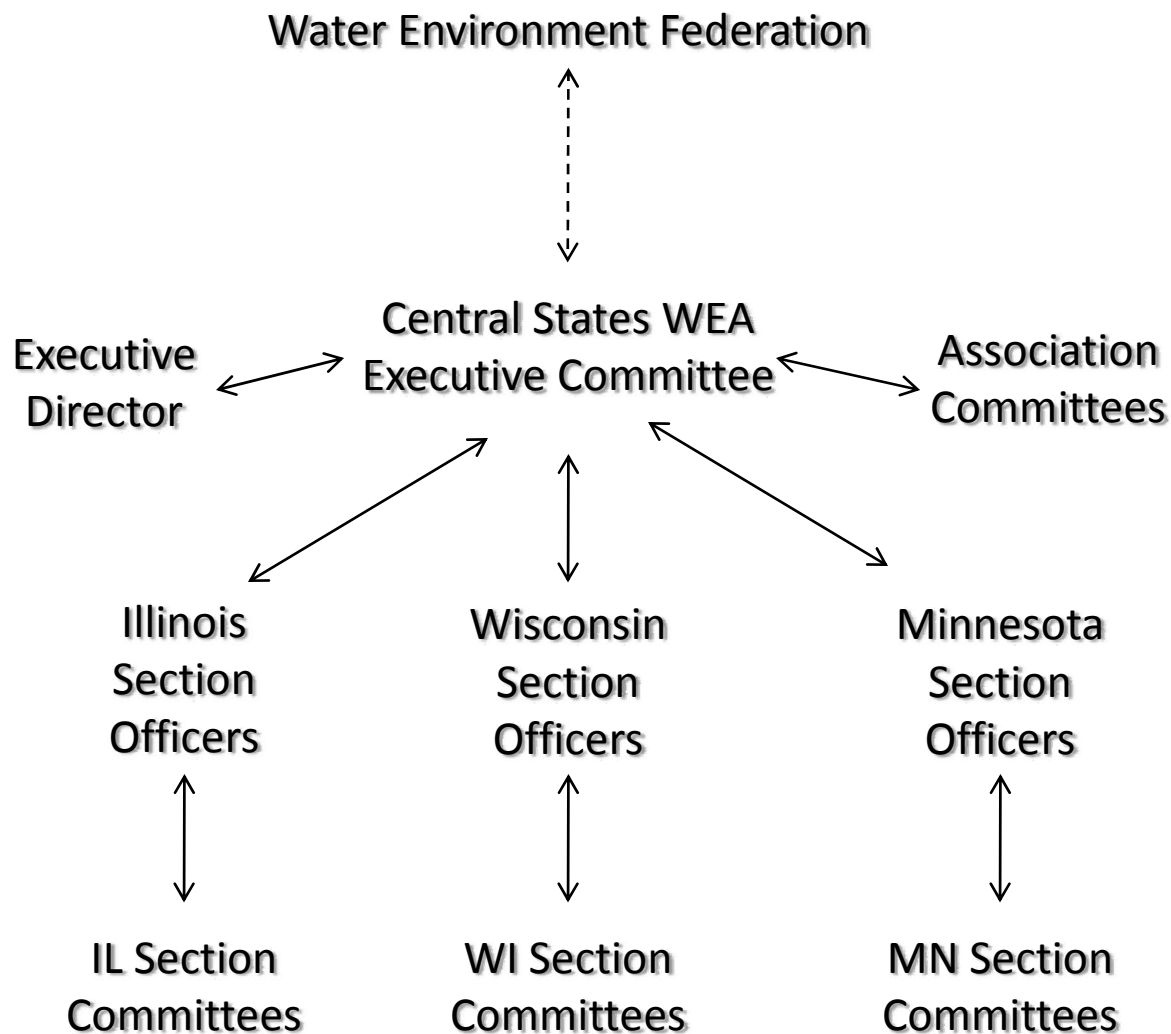


# Leadership, Knowledge & Networking

Central States  
Water  
Environment  
Association

CSWEA  
Leadership  
Academy

April 2011





Central States  
Water  
Environment  
Association

CSWEA  
Leadership  
Academy

April 2011

## *Leadership, Knowledge & Networking*

- How do you choose an organization?
  - ✓ Be a member of multiple organizations
  - ✓ Pick ones that are aligned with your goals
  - ✓ Find organizations where you enjoy the people
  - ✓ Find balance between Prof. Org. and Work



Central States  
Water  
Environment  
Association

CSWEA  
Leadership  
Academy

April 2011

## *Leadership, Knowledge & Networking*

- How do you get involved in an organization?
  - ✓ Research the opportunities – committees, work groups, etc.
  - ✓ Find the leadership of that work group and tell them you are interested



Central States  
Water  
Environment  
Association

CSWEA  
Leadership  
Academy

April 2011

## *Leadership, Knowledge & Networking*

- What if you want to be involved, but not lead?
  - ✓ Not a problem
  - ✓ Most people are just glad to have the help
  - ✓ But be committed and accountable



Central States  
Water  
Environment  
Association

CSWEA  
Leadership  
Academy

April 2011

## *Leadership, Knowledge & Networking*

- What kind of time commitment does it take??
  - ✓ You can commit as little or as much as you want
  - ✓ Caution: find balance between personal, work and professional organizations



Central States  
Water  
Environment  
Association

CSWEA  
Leadership  
Academy

April 2011

# *Leadership, Knowledge & Networking*

- Professional Organizations
  - Leadership Skills
    - ✓ Observe different leadership styles and strategies
    - ✓ Take a leadership role through committees, etc.
    - ✓ Learn how to empower others to lead
  - Knowledge Transfer
    - ✓ Learn about the challenges facing our profession
    - ✓ Increase your technical expertise
    - ✓ Share your knowledge and experience with others
  - Networking Opportunities
    - ✓ Increase your pool of resources
    - ✓ Develop relationships outside your organization
    - ✓ Improve your social skills





Central States  
Water  
Environment  
Association

CSWEA  
Leadership  
Academy

# *“Leadership, Knowledge, and Networking Opportunities through Professional Organizations”*

*Scott Trotter, P.E., BCEE*

April 2011