

BIOWIN TRAINING



SETTING UP WHOLE PLANT MODELS

A 2-day training session

April 17 - 18, 2018

Madison, WI

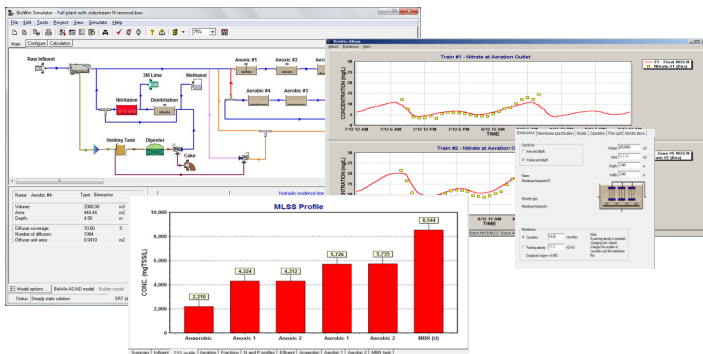
Version 5.3!

This **introductory** BioWin training course is structured to give new users the tools they need to use BioWin effectively. The course is made up of a number of case studies and presentations, and hands-on experience is emphasized throughout the instruction. Attendance will be limited to allow ample time for user interaction with the instructor, in question and answer sessions.

COURSE PROGRAM

- BioWin Familiarization
- Building a Configuration
- Upgrade for Nutrient Removal
- Wastewater Characteristics
- BioWin Examples
- BNR Dynamic Performance
- Modelling of Diffused Aeration Systems
- Aeration Simulation
- BioWin Controller Module
- Secondary Clarifiers
- Modelling Secondary Clarifiers
- Solids Treatment Train

... and much more



COURSE CONTACT

Alan Grooms
Madison Metropolitan SD
+1 (608) 222-1201
alang@madsewer.org

COURSE LOCATION

1610 Moorland Road
Madison, Wisconsin
53713-3398
USA

EnviroSim
ASSOCIATES LTD.

ADVANCED BIOWIN TRAINING

A 2-day training session

April 19 - 20, 2018

Madison, WI

This **advanced** BioWin course is designed to cover a range of topics on the application of BioWin. The assumption is that the majority of attendees are "experienced" BioWin users, or have recently attended the **Setting Up Whole Plant Models** course. The primary objectives are to provide information on certain model details, and to cover a range of example applications of BioWin.

COURSE PROGRAM

The case studies and discussions are drawn from the following topics:

- Review of Useful Features in BioWin, including :
 - * *The interface*
 - * *Customizing BioWin*
 - * *New elements*
 - * *Model options*
 - * *Mass balance / kinetic information*
 - * *Numerical solver settings*
 - * *Ash content of biomass*
 - * *Power and operating expenses*
- pH Modeling
- BioWin Controller Module
- Methanol Addition
- Aeration Systems
- Membrane Bioreactors
- Biofilm Modeling
- Anaerobic Digestion
- Struvite Precipitation
- Chemical Phosphorus Precipitation
- Sidestream Treatment
- SBR Systems
- Oxidation Ditch Systems

... and much more

Madison Metropolitan
Sewerage District

BIOWIN TRAINING



REGISTRATION

I wish to attend :

- Setting Up Whole Plant Models April 17-18 (\$725)**
- Advanced BioWin Training April 19-20 (\$825)**

Total cost : _____

Name of Attendee : _____

Name of Company : _____

City : _____ Province/State : _____ Postal/ZIP Code : _____

Country : _____ Phone : _____ E-mail Address : _____

Any special dietary needs? If so, please indicate : _____

Signature : _____

PLEASE NOTE :

1. Checks should be made out **Madison Metropolitan Sewerage District** with training name and date in the subject area
2. Course fees include course manual and lunch (they do not include hotel, travel, etc.).
3. Registrations are transferable **but cannot be cancelled**.
4. Attendees must provide their own laptop with BioWin 5.3 installed (www.envirosim.com/bw53setup.exe)

CONVENIENT HOTELS IN THE AREA :

HOLIDAY INN EXPRESS

610 John Nolen Dr, Madison, WI 53713
+1 608-709-5050
ihg.com

COMFORT INN

722 John Nolen Dr, Madison, WI 53713,
+1 608-255-7400
choicehotels.com

COUNTRY INN AND SUITES

400 River Pl, Madison, WI 53716
+1 608-221-0055
countryinns.com

COURSE LOCATION

Madison Metropolitan SD
SHOP ONE
1610 Moorland Road
Madison, Wisconsin
53713-3398

COURSE CONTACT

ALAN GROOMS
Madison Metropolitan SD
+1 (608) 222-1201
alang@madsewer.org

DIRECTIONS www.madsewer.org/About-Us/Contact-Us

**Please submit registration + payment
before March 31st, 2018 to :**

Madison Metropolitan Sewerage District
Attn : Comptroller
1610 Moorland Rd
Madison, WI 53713