

Total Maximum Daily Loads for Total
Phosphorus, Total Suspended Solids,
and Fecal Coliform
Milwaukee River Basin, Wisconsin

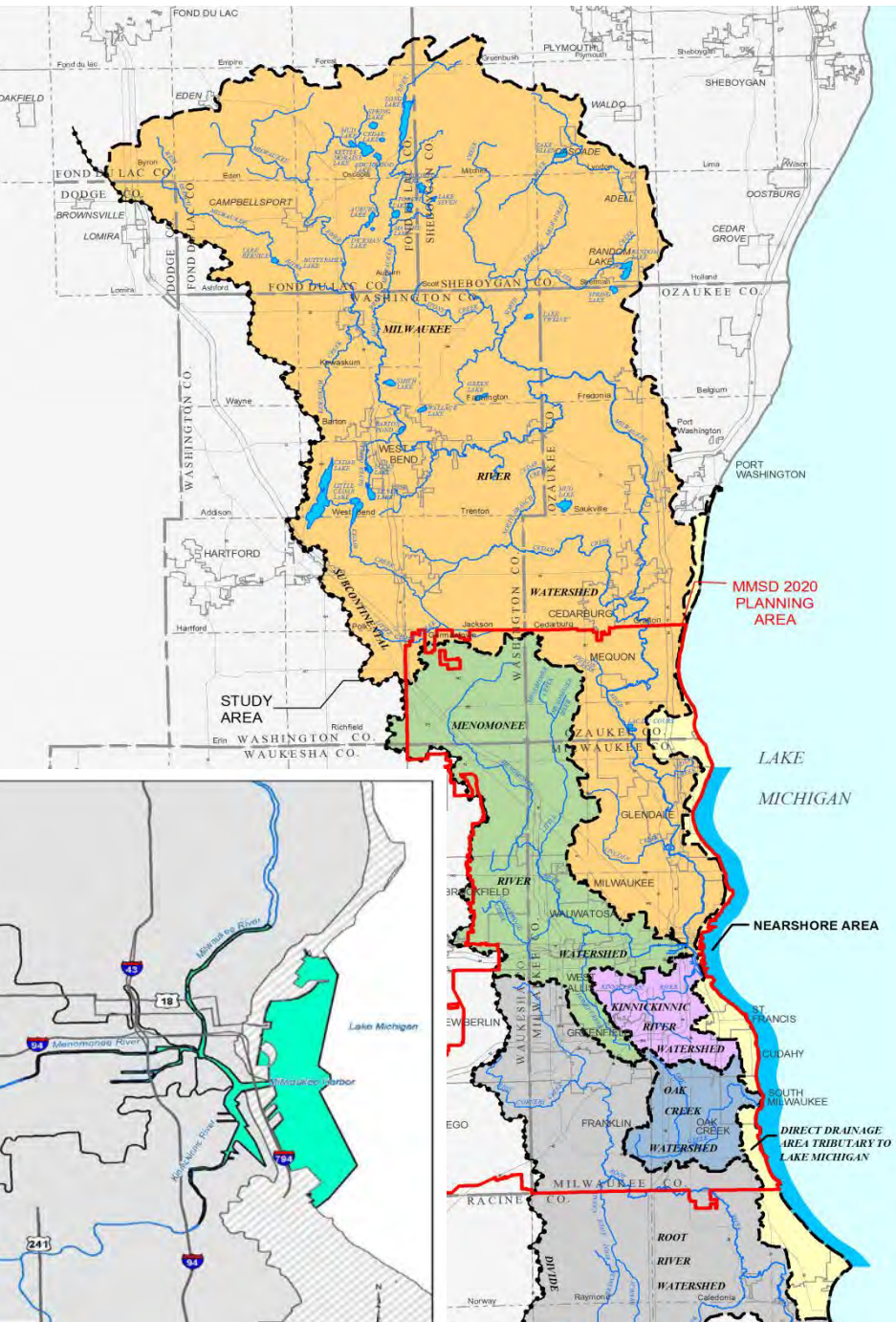


2016 Government Affairs Seminar

2/25/2016

Presentation Outline

1. Origin of the concept
2. Project set up (3rd Party TMDL)
3. Evaluation of the 3rd Party TMDL Process
4. Advantages/what went well
5. Disadvantages/what did not go as well
6. Project Status



TMDL Study Area:

Watershed square miles

Kinnickinnic River 25

Menomonee River 136

Milwaukee River 700

Estuary 16

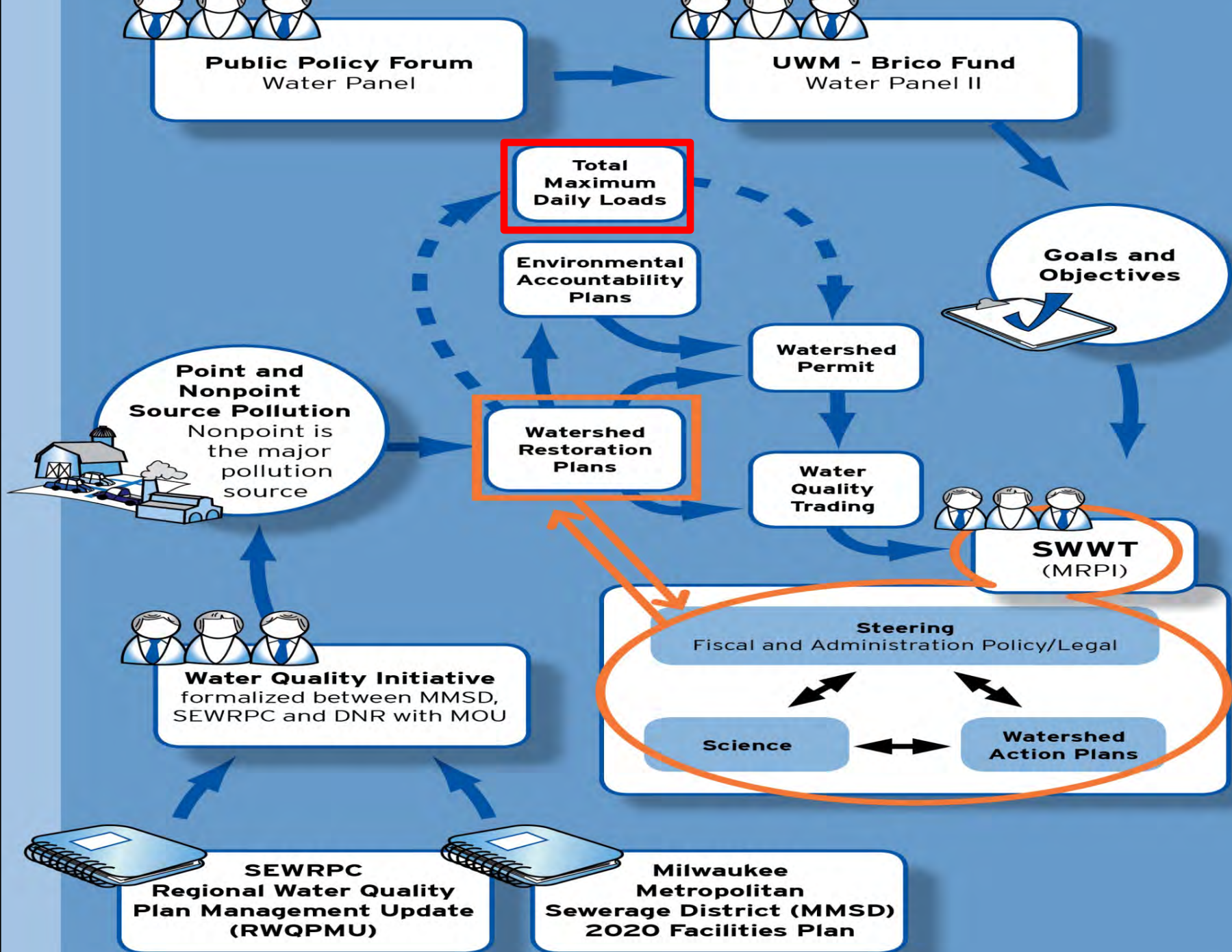
Total: 877

Path to 3rd Party TMDLs

1. Completion of MMSD 2020 Facilities Plan and SEWRPC* Regional Water Quality Management Plan Update (RWQMPPU)
2. Use Same data/Same models
3. Build on conclusion: “non-point” pollution loads are the watersheds biggest water quality issues

*SE Wisconsin Regional Planning Commission

“Non-point” meaning urban/agricultural runoff and urban stormwater



Next Steps

Many groups discussed what to do next...

Options considered:

- a. Do nothing
- b. Watershed Reclamation Plans (WRP)
- c. TMDLs (Total Maximum Daily Loads)
- d. EAPs (Environmental Accountability Plans)

Actions Taken after RWQMPS

1. SWWT* formed
2. Watershed Restoration (WRP) Plans Developed by MMSD with public/stakeholder input for Menomonee River & Kinnickinnic River
3. Implementation Plans by SWWT for both
4. 3rd Party TMDL - started 2011

*Southeastern Wisconsin Watersheds Trust (Sweet Water)

Why 3rd Party TMDL?

1. Keep momentum of 2020FP and RWQMPU
2. Looming new phosphorous water quality standards
3. Development of sound basis for programs (Green Infrastructure/NR 151/Illicit discharges)
4. Models and data from RWQMPU available
5. GLRI Funding available
6. DNR support for the concept

TMDL Team

- MMSD – project administration
- CDM Smith – led technical consulting team
- DNR – regulatory responsibility and policy input
- Others:
 - SEWRPC
 - SWWT – Public Involvement and background
 - EPA – review and comment for future approval(s)

3rd Party TMDL Lessons Learned

Positive aspects:

1. Build on RWQMPS/MMSD 2020 Plan (models/data)
2. TMDLs conducted earlier
3. Resources seemed adequate
 - a. MMSD - \$1.2M
 - b. EPA Grant - \$800k
4. Developed with many entities collaborating

3rd Party TMDL Lessons Learned

Not so positive:

1. Project administration
2. Funding turned out not to be adequate
3. Schedule was too optimistic
4. Despite work on RWQMPU - models needed to be modified

Project Status - Future Events

1. Draft TMDL
2. Series of Stakeholder and Focus Group Meetings
3. Public Hearing
4. Response to comments
5. Submittal to EPA
6. Anticipated EPA Approval

QUESTIONS?

