

Wheaton Sanitary District Southside Interceptor Sewer

Central States Water Environmental Association
Collections Systems Seminar

June 10, 2010

**Wheaton Sanitary District
Strand Associates, Inc.
Benchmark Construction Co., Inc.**



Need for Replacement

- Aging Interceptor Pipes
 - 24" VCP Built in 1920's
 - 36" CMP Built in 1950's
- Access Issues
- Additional Capacity
 - Protect against SSO's



Project History

- Existing Sewer Pipe at End of Design Life
 - Planning Started in 2005
 - Public Information Meetings in 2007
 - Design in 2008 & 2009
 - Opened Bids in October 2009
 - Project Construction Cost \$12.5 Million



Project History (continued)

- Hired Strand Associates 2005
 - Route Study
 - Design
 - Public Meetings
 - Permitting



Project Overview

- 3 Miles 48" Fiberglass Pipe with some Reinforced Concrete Pipe
- 5 Pushes
- 700' Long Tunnel
- Easements needed



Benefits of Project

- New Sewer – Increased Capacity
- Newly Paved Roadways
- Brings Revenue to the Region
- Stimulus Funding Reduces Sewer Rate Increase
- Reduced I/I





Funding



- Southside Interceptor Project along with Plant Improvements Project Funded Through Illinois EPA Loans
- \$8,693,193 Funded under ARRA 2009
 - \$4,346,596 required to be repaid
- \$8,693,193 funded under Water Pollution Control Loan Program
 - Will be required to be repaid





Project Cost



- Southside Interceptor Replacement Project
 - Engineers Estimate ~ \$15 Million

- Preliminary and Primary Treatment and Electrical Improvements
 - Engineers Estimate ~ \$5 Million (AECOM)





Bidding



- ARRA Requirements
 - DBE Requirements
 - Newspaper Advertisements
 - Wage Rate
 - Buy American

- Competitive bidding environment



Bid Results

➤ Low Bidder

- Benchmark Construction Co. (\$12,219,590)

BIDDER AND ADDRESS	Bid Bond or Guarantee	Addenda Acknowledged	Computed Total Bid
Benchmark Construction Co. 2260 Southwind Blvd. Bartlett, IL 60103	5%	1 & 2	\$ 12,348,045.00
DiPaolo Company 4360 DiPaolo Center Glenview, IL 60025	5%	1 & 2	\$ 14,608,430.80
Joel Kennedy Constructing Corp. 400 Noll Street Waukegan, IL 60085	5%	1 & 2	\$ 15,727,480.00
Martam Construction, Inc. 1200 Gasket Drive Elgin, IL 60120	5%	1 & 2	\$ 17,622,595.80
Merryman Excavation, Inc. 1501 Lamb Road Woodstock, IL 60097	5%	1 & 2	\$ 22,257,573.81

➤ Plant Improvements Job Low Bidder

- Maxim Construction Corp. (\$3,409,000)





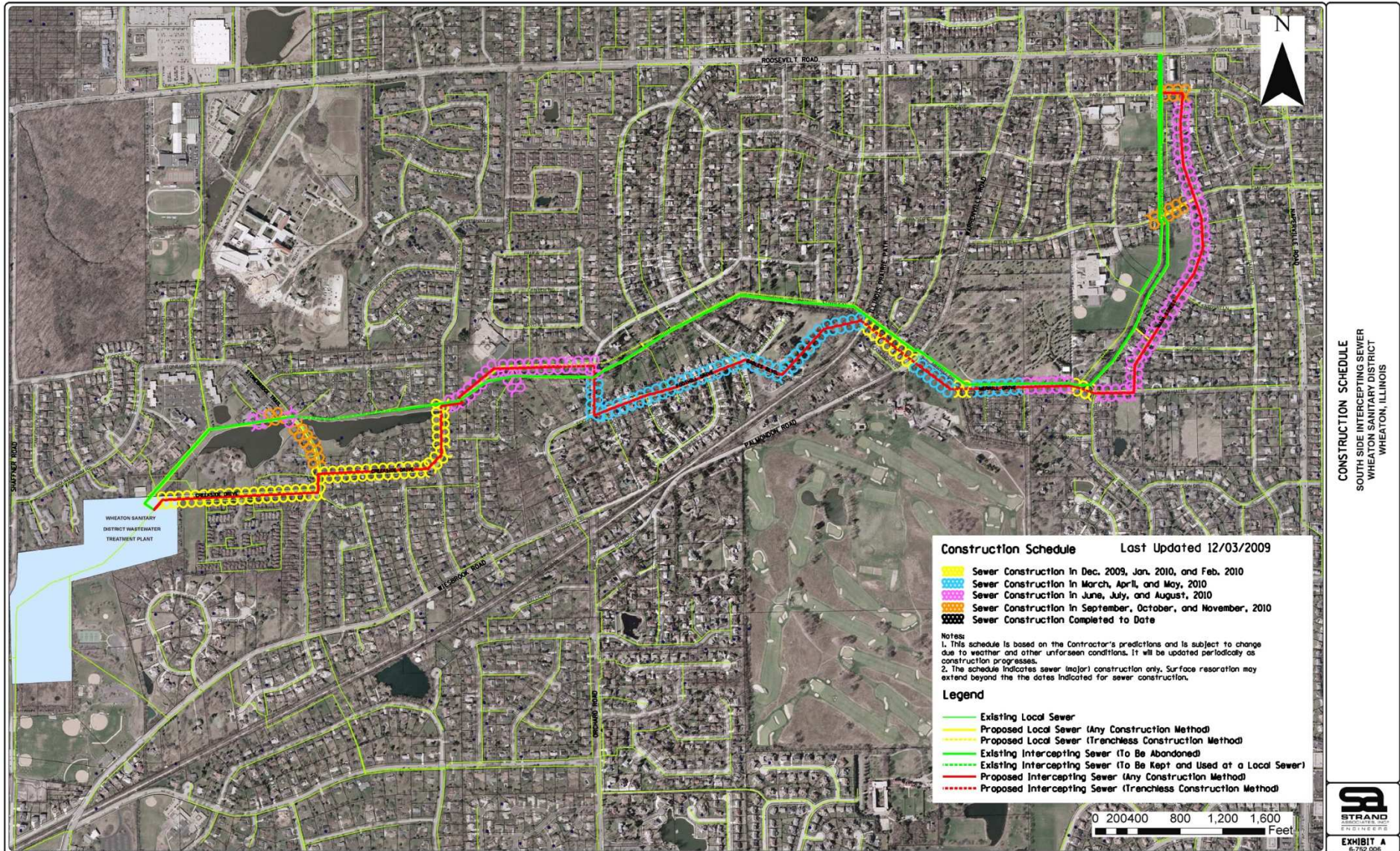
Project Schedule



- Project Design & Schedule Approved by Illinois Environmental Protection Agency (IEPA)
- Two-Year Construction Schedule
 - January 2010 Start
 - Substantial Completion November 2010
 - Final Completion December 2011



Project Route





➤ Plan Review

➤ Roads

➤ Trees



Easement Acquisitions

- 5 Private Home Owners
- St. Matthews Church
- Madison Elementary School
- Temporary & Permanent Easements
- Appraisals
- Compensation Offered



Private Home Owners

Address	Amount Offered	Easement Size (SF)	
		Temporary	Permanent
Creekside Drive	\$7,100	2271	1150
Aurora Way	\$16,001	4849	7997
Aurora Way	\$1,139	None	699
Hawthorne Lane	\$5,400	4500	None
Merrill Drive	\$5,084	3760	None



Madison School



Madison School

- Timing
- Easement Provisions
- Temporary Easement
 - 37,995 Sq. Ft.
- Permanent Easements
 - Some Existing
 - 12,696 Sq. Ft.



St. Matthews Church

- 4.88 Acres
- Original Plans
- Easement Negotiations
- Purchase Negotiations
 - \$1.65 Million Purchase Price



Chicago Golf Club



Chicago Golf Club

- Established Late 1800's
- Prestigious
- Timing
- Provisions



Public Meetings

- 2007
 - Public Notification
 - Public Input

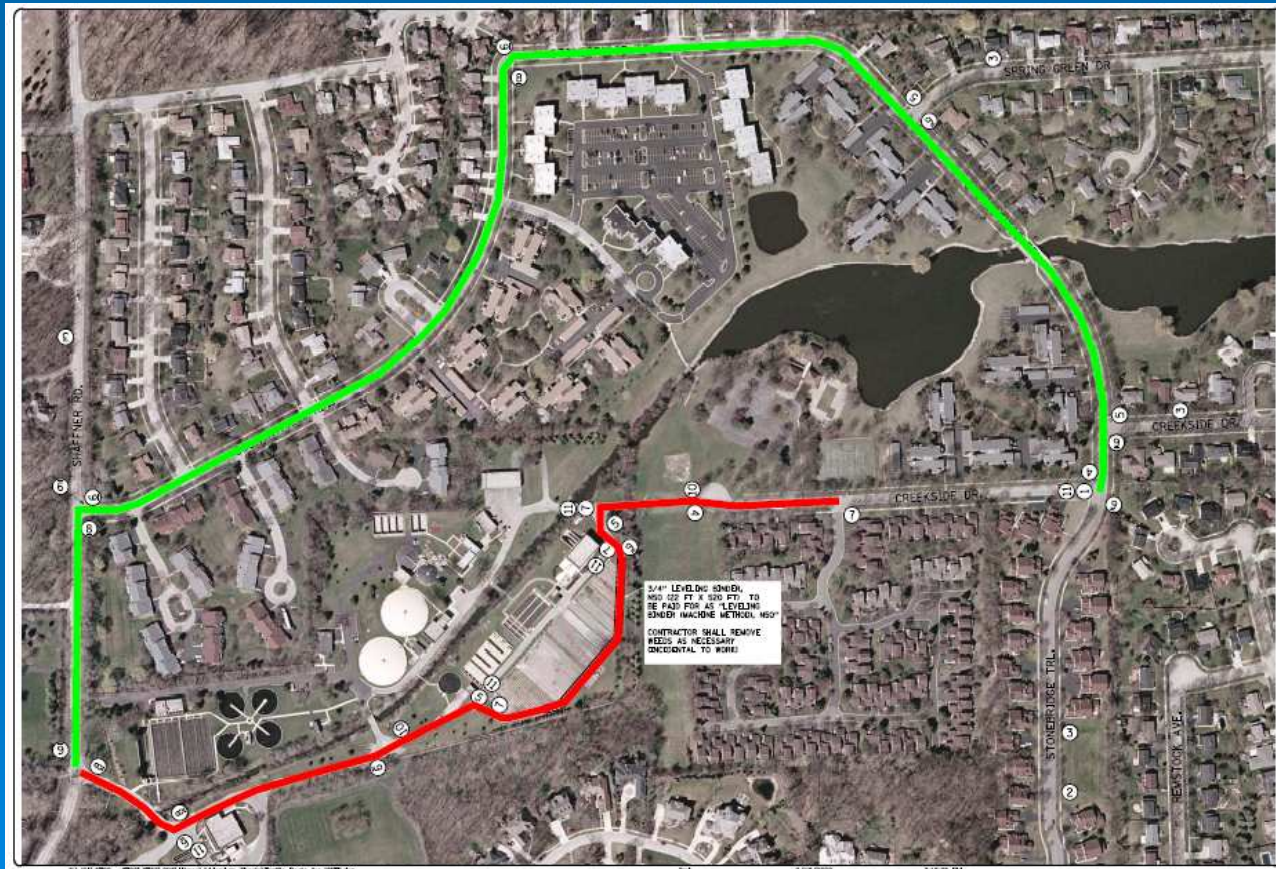
- Foothill Resident Meeting

- December 2009
 - Streams Subdivision
 - City Hall Wheaton



Streams Garden Villa Subdivision

➤ Detour Route



City Hall Public Meeting

- Anybody interested
- City of Wheaton
- Strand Associates
- Benchmark Construction Co.
- Project Overview



TV Interview

- Steve Maney
 - Executive Director Wheaton Sanitary District
- Wheaton Cable Television
 - Public Service Announcement
 - TV Interview – Steve Maney, P.E.
- Radio Interview



Other Preparations

- Tree Trimming
- Utility Poles
- Preconstruction Videos
- Newspaper Releases/Articles



Continuing Public Relations

- Weekly Meetings
- Resident Calls
- Onsite Meetings
- Website
 - www.wsd.dst.il.us



Strand Associates

- Mike Waldron, P.E.
- Design
- Construction



Questions

- Matt Streicher, P.E.
 - streicher@wsd.dst.il.us

